

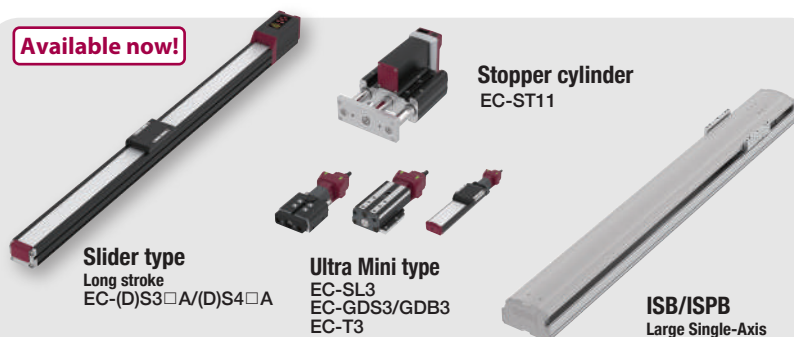
2023 IAI ROBOT LINEUP GUIDE

Product Lineup Catalog

- EleCylinder
- RoboCylinder
- Industrial robots

www.iai-automation.com

Available now!



Slider type
Long stroke
EC-(D)S3□A/(D)S4□A

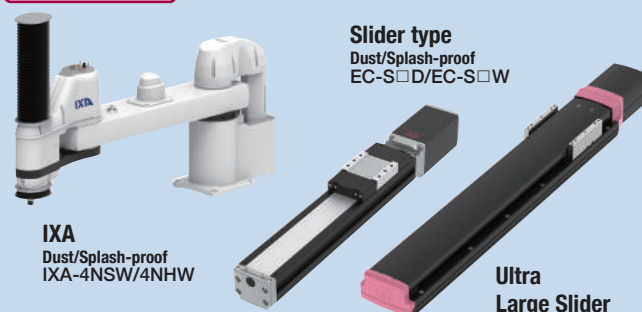
Ultra Mini type
EC-SL3
EC-GDS3/GDB3
EC-T3

Stopper cylinder
EC-ST11

ISB/ISPB
Large Single-Axis
New large type

ELECYLINDER® Series

Coming soon!



Slider type
Dust/Splash-proof
EC-S□D/EC-S□W

IXA
Dust/Splash-proof
IXA-4NSW/4NHW

Ultra Large Slider

EleCylinder

Simple yet high performance electric actuators that brings you profits.

EleCylinder can be operated only by ON/OFF signals like solenoid valves. It's easy to operate for beginners. You can adjust A (Acceleration), V (Velocity) and D (Deceleration) individually by input percentage. It can start/stop smoothly at high speed.



EC
ELECYLINDER®

Program Panel

Electric actuator can change speed by entering numeric values directly.

No need to connect a PC or a teaching pendant. Setting and trial operations can be performed by the ELECYLINDER alone.

Equipped with battery-less absolute encoder

Built-in controller type

Standard

Rod type

Body width (mm): 63-73
Stroke (mm): 50-300
Max. payload (kg):
Horizontal 80/Vertical 19



EC-(D)R□

Slider type

Body width (mm): 63-73
Stroke (mm): 50-500
Maximum payload (kg):
Horizontal 51/Vertical 19



EC-(D)S□

Side-mounted motor

Body width (mm): 63-73
Stroke (mm): 50-500
Maximum payload (kg):
Horizontal 51/Vertical 19



EC-(D)S□□R

Small type

Body width (mm): 35-44
Stroke (mm): 50-300
Max. payload (kg):
Horizontal 18/Vertical 6.5



EC-(D)S□

Small, side-mounted motor

Body width (mm): 35-44
Stroke (mm): 50-300
Maximum payload (kg):
Horizontal 18/Vertical 6.5



EC-(D)S□R

Standard (Wide Type)

Wide type

Body width (mm): 100, 120
Stroke (mm): 50-500, 50-800
Maximum payload (kg):
Horizontal 44, 62/Vertical 7, 13.5



EC-(D)WS□

Wide, side-mounted motor

Body width (mm): 100, 120
Stroke (mm): 50-500, 50-800
Maximum payload (kg):
Horizontal 44, 62/Vertical 7, 13.5



EC-(D)WS□□R

Radial Cylinder

Radial Cylinder®

Body width (mm): 35-73
Stroke (mm): 50-315
Maximum payload (kg):
Horizontal 35-80/Vertical 6.5-19



EC-(D)RR□□
EC-(D)RR□□R

Belt drive

Long stroke

Body width (mm): 60-73
Stroke (mm): 300-2600
Maximum payload (kg):
Horizontal 20



EC-(D)B□S
EC-(D)B□SU

High-rigidity Radial Cylinder

High-rigidity Radial Cylinder

Body width (mm): 60-70
Stroke (mm): 550-1000



EC-(D)RR□X□AH

Body width (mm): 63-75
Stroke (mm): 50-1000
Maximum payload (kg):
Horizontal 80/Vertical 28



EC-(D)RR□□AH
EC-(D)RR□□AHR

High-rigidity

High-rigidity slider type

Body width (mm): 63-75
Stroke (mm): 50-800
Maximum payload (kg):
Horizontal 51/Vertical 25



EC-(D)S□□AH

Side-mounted motor

Body width (mm): 63-75
Stroke (mm): 50-800
Maximum payload (kg):
Horizontal 51/Vertical 25



EC-(D)S□□AHR

EleCylinder

Simple yet high performance electric actuators that brings you profits.

EleCylinder can be operated only by ON/OFF signals like solenoid valves. It's easy to operate for beginners. You can adjust A (Acceleration), V (Velocity) and D (Deceleration) individually by input percentage. It can start/stop smoothly at high speed.



Compact

Rod type			Table type	
Body width (mm): 60 Stroke (mm): 30, 50 Max. payload (kg): Horizontal 8/Vertical 2.5	Body width (mm): 30-50 Stroke (mm): 30, 50, 150 Max. payload (kg): Horizontal 8-35/Vertical 2.5-6.5	Body width (mm): 80-110 Stroke (mm): 50, 150 Max. payload (kg): Horizontal 8-35/Vertical 2.5-6.5	Body width (mm): 30-40 Stroke (mm): 30, 50, 150 Max. payload (kg): Horizontal 8-12.5/Vertical 2.5-6.5	Body width (mm): 78-88 Stroke (mm): 30, 50, 100, 150 Max. payload (kg): Horizontal 20/Vertical 6.5
EC-GS4	EC-RP□	EC-GD□	EC-TC□	EC-TW□

Others

Rotary	Stopper cylinder	Large Slider type	Gripper
Body width (mm): 90-185 Max. swaying angle (degree): 330 Max. speed (degree/s): 600	Body width (mm): 150 Stroke (mm): 50	Body width (mm): 130-160 Stroke (mm): 1100-2500 Max. payload (kg): Horizontal 27-108/Vertical 5.4-36	200V power supply for Large sliders Body width (mm): 80-130 Max. Stroke (mm) One side: 10-20 Max. Grip force (N) One side: 28-360
EC-RTC□	EC-ST15(ME)	EC-S□(X)	PSA-200
			EC-GRB□

Dust/Splash-proof specification

Rod type	Radial Cylinder®
Body width (mm): 63-73 Stroke (mm): 50-300 Maximum payload (kg): Horizontal 80/Vertical 19	Body width (mm): 63-73 Stroke (mm): 65-315 Maximum payload (kg): Horizontal 80/Vertical 19
EC-R□W	EC-RR□W

Cleanroom specification

Slider type		
Body width (mm): 40-70 Stroke (mm): 50-350 Maximum payload (kg): Horizontal 51/Vertical 19	Body width (mm): 60-80 Stroke (mm): 50-800 Maximum payload (kg): Horizontal 51/Vertical 25	Body width (mm): 100, 120 Stroke (mm): 50-800 Maximum payload (kg): Horizontal 62/Vertical 13.5
EC-(D)S□□CR	EC-(D)S□□AHCR	EC-(D)WS□□CR

Field network connection unit

Field network compatible remote I/O



REC

Teaching pendant

Teaching pendant with dedicated power supply unit



TB-03

TB-03E

Built-in Program Panel



RoboCylinder

These affordable, highly precise and high rigidity actuators have 1/5th the running cost of a pneumatic system.

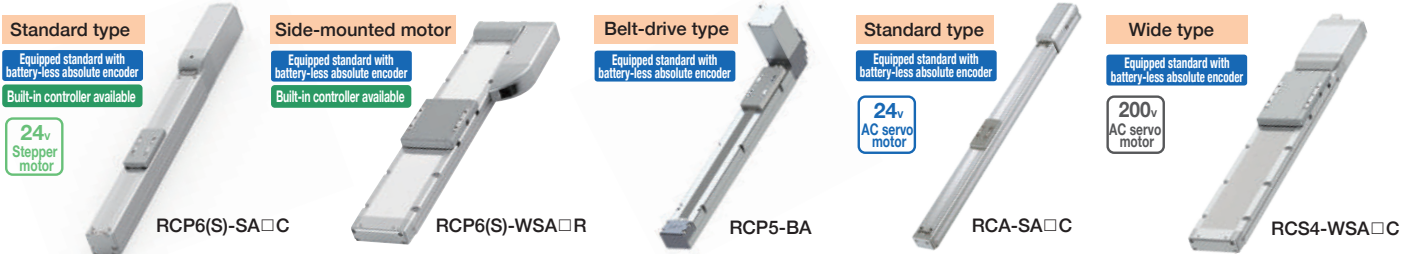
RoboCylinder is high-performance electric actuator equipped with a ball screw, linear guide, and servo motor. These next-generation actuator has multi-point positioning capability as well as the ability to change speed and acceleration, unlike anything seen with air cylinders.



Slider Type

Suitable for moving something horizontally and for a long distance.

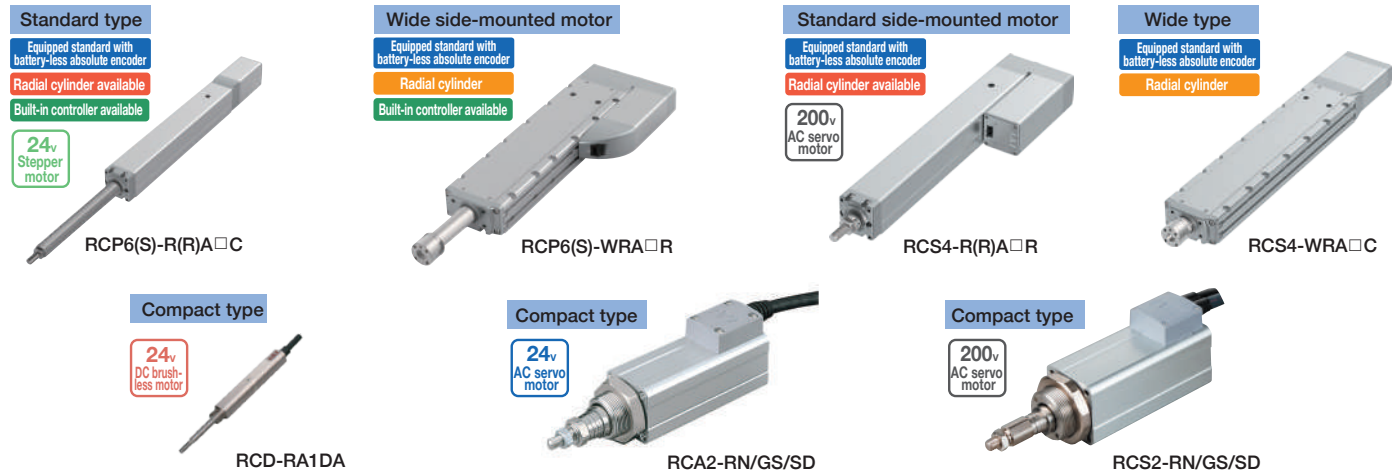
Body width (mm): 22-160, Stroke (mm): 25-2600 • Maximum payload (kg): Horizontal 100 / Vertical 55



Rod Type

Use rod type when moving workpieces vertically or carrying them with a chuck. It is also suitable for pushing operations and press-fitting operations.

Body width (mm): 12-200, Stroke (mm): 10-800 • Maximum payload (kg): Horizontal 300 / Vertical 150 (Except High payload)



Servo press

Rod type actuators are equipped with a load cell at the rod tip. High-precision pushing (pressurizing) operations are possible.

Body width (mm): 40-200,
Stroke (mm): 100-520
Max. pushing force (N): 50000



Pulse Press

A pulse press is an actuator combining a stepper motor and load cell.

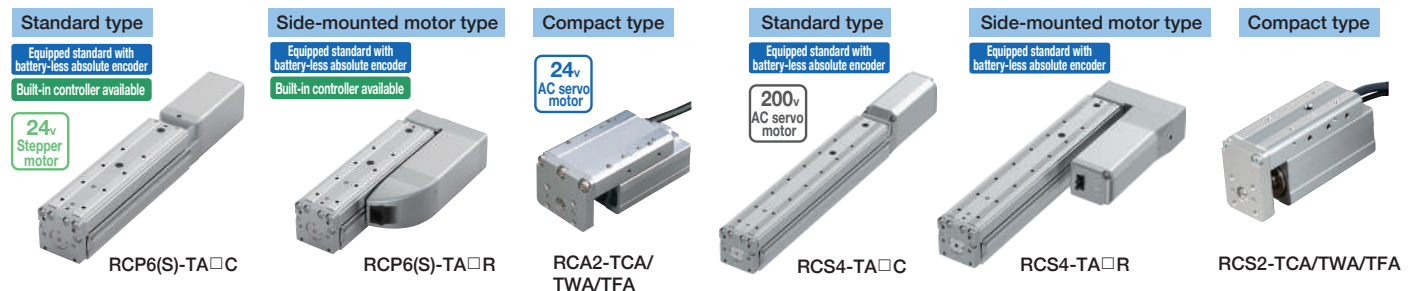
Max stroke (mm):
310-320,
Max. push force (N):
300-2000



Table type

Use this type when moving workpieces vertically and when moment loads are applied.

Body width (mm): 32-95, Stroke (mm): 20-390 • Max. payload (kg): horizontal 30 / vertical 24.



RoboCylinder

These affordable, highly precise and high rigidity actuators have 1/5th the running cost of a pneumatic system.

Rotary type

Use this type when changing the direction of the workpiece or for precise positioning as an index.

Body width (mm): 45-233, Maximum speed (degree/s): 266-1200

Hollow type

Equipped standard with battery-less absolute encoder

24v Stepper motor



RCP6-RTFML

Flat type



RCP2-RTC

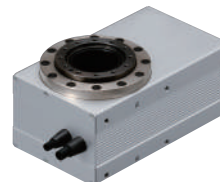
Vertical type



RCP2-RTB

Rotary type

200v AC servo motor



RCS2-RTC□L

Direct drive motor

Body width (mm): 180
Max. speed (degree/s): 1800



DDA-LT/LH

Gripper type

Suitable for gripping and lifting up workpieces.

Stroke (mm): 2-finger 4-260, 3-finger 10, 14 (degree): 2-finger 180, 3-finger 19

Solenoid type



GRM-S/M EG (Outer diameter grip)
S/M IG (Inner diameter grip)

Ultra compact slide type

24v DC brush-less motor



RCD-GRSNA

Long stroke: Coupling type

Equipped standard with battery-less absolute encoder

Built-in controller available

24v Stepper motor



RCP6(S)-GRST□C

Long stroke: Side-mounted motor type

Equipped standard with battery-less absolute encoder

Built-in controller available



RCP6(S)-GRST□R

Thin slide type

Equipped standard with battery-less absolute encoder

24v Stepper motor



RCP6-GRT

Slide type

24v Stepper motor



RCP4-GRS

Lever type



RCP4-GRL

3-finger slide type



RCP2-GR3S

3-finger lever type



RCP2-GR3L

Rotary chuck type

Rotation capability with the rotary and gripping capability with the gripper are integrated into one unit.

24v Stepper motor



RCP6-RTCK

Others

Wrist unit

Body width (mm): S/136.5, M/136.5
Max. payload (kg): S/1, M/2

Equipped standard with battery-less absolute encoder

24v Stepper motor



WU-S/M

Single-axis Robot

Intelligent actuator with high speed and high transfer capabilities

The single-axis robot is a high-precision indexing device, which is equipped with a base, linear guide, ball screw and servo motor integrated into one unit. It reduces designing and adjustment times, achieving lower costs.

Slider type

High accuracy type

200V AC servo motor



ISB/ISPB

Equipped standard with battery-less absolute encoder



NEW
New large type:
IS(P)B-WXM(X)-750

High rigidity type (iron-base)



SSPA

Ball screw type (standard)



ISA/ISPA

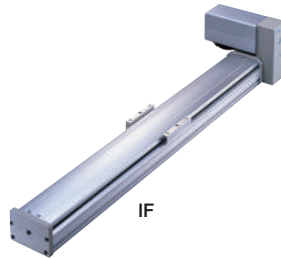
Simple dust-proof type

Equipped standard with battery-less absolute encoder



ISDB/ISPDB

Belt-drive, high rigidity type



IF

Belt-drive type



IFA

Nut-rotation type



NSA

Cleanroom Specification

Suitable for transfer and indexing in the cleanroom.

Electric actuators for cleanroom applications, compliant with Class 10 or Class 100.

Slider type

Equipped standard with battery-less absolute encoder

Built-in controller available



RCP6(S)GR-SA□C

Rod type



RCA2CR-GS

Gripper type



RCP2CR-GRM

Rotary type

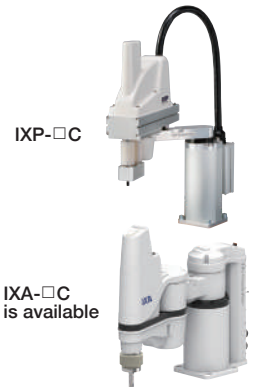


DDACR

RCP2CR-RT

SCARA robot

Equipped standard with battery-less absolute encoder



IXP-□C

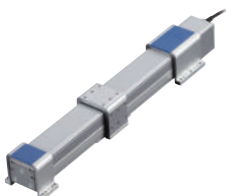
IXA-□C is available

Dust/Splash-proof Specification

Operations with extreme dust or water splashes.

Degree of protection conforms to IP50-67.

Slider type



RCP4W-SA□C

Rod type

Equipped standard with battery-less absolute encoder

Radial cylinder available

Built-in controller available



RCP6(S)W-R(R)A□C

Gripper type



RCP2W-GRM

Rotary type



RCP2W-RT

RCP2W-RT

SCARA robot

Equipped standard with battery-less absolute encoder



IXA-4NSW□□□□



IXP-□W

SCARA Robot

Horizontal articulated robots suitable for high-speed transfer operations of light workpieces

IXA

Standard type

High-speed type

Equipped standard with battery-less absolute encoder

Arm length (mm): 180-1200
Standard cycle time (S): 0.26-0.61
Max. payload (kg): 1-50

200v AC servo motor



IXA-NNN



IXA-NSN

Long arm type

Equipped standard with battery-less absolute encoder



IXA-NHN

IXP (Power Con type)

Arm length (mm): 180-650
Max. payload (kg): 6

Standard type

Equipped standard with battery-less absolute encoder

24v Stepper motor



IXP-3N

Tabletop Robot

All-in-one, table-top type robot equipped with built-in controller and power supply unit

Selectable from stepper motors or servo motors.
Body width (mm): 401-755.8 XY axis stroke (mm): 150-500

24v Stepper motor
24v AC servo motor

A-type [movable workpiece type]

3-axis type

Equipped standard with battery-less absolute encoder

TTA-A3



C-type [fixed workpiece type]

3-axis type

Equipped standard with battery-less absolute encoder

TTA-C3



Cartesian Robot

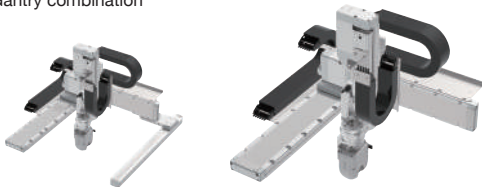
Many variations are available by combining single-axis robots.

CRS 6-axis type robot

CRS-XBA/CRS-XGA/CRS-XBB/CRS-XGB

Equipped standard with battery-less absolute encoder

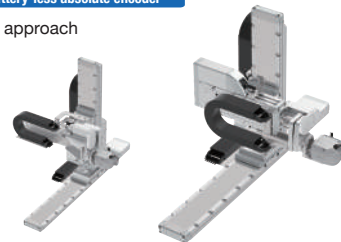
Gantry combination



CRS-XACY/CRS-XADY/CRS-XZEY

Equipped standard with battery-less absolute encoder

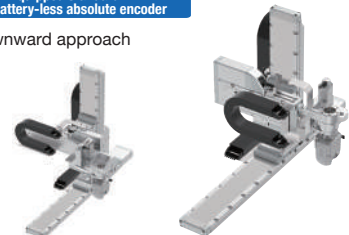
Side approach



CRS-XACY/CRS-XADY/CRS-XZEY

Equipped standard with battery-less absolute encoder

Downward approach

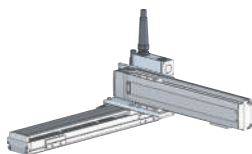


2-axis configuration

XYB type

Equipped standard with battery-less absolute encoder

Y-axis base mount

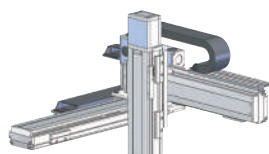


3-axis configuration

XYB+Z base mount

Equipped standard with battery-less absolute encoder

Y-axis base mount
Z-axis base mount



4-axis configuration

ZR axes integrated type



6-axis configuration

Z-axis base mount type (Z-axis slider movable)



Realizes high rigidity by ingenious mechanical design. Number of axes: 2-6 Max. payload (kg): 65

Controller

Select an operational pattern based on the purpose of use.

IAI's controller series

R-unit

This series of unit-connecting controllers allows you to freely select and combine connected actuators and control methods.



RCON
Positioner Type

Max. **16 axes**



REC
ELECYLINDER Drive Unit

Max. **16 axes**



RSEL
Program Type

Max. **8 axes**

Positioner type : Single - axis controller

Small position controller
Max. dimensions: W28mm x D69mm x H80mm

Position controller DC24V/AC100V/AC200V types
Max. dimensions: W35mm x D69.1mm x H190mm

Max. dimensions:
W49mm x D116mm x H158mm

Max. dimensions:
W72mm x D121mm x H194mm



PCON-CYB



ACON-CYB



DCON-CYB



PCON-CB



ACON-CB



DCON-CB



SCON-CAL



SCON-CB

Program Type : Multi-axis controller

Max. dimensions:
W100mm x
D126mm x
H177~195mm

Max. dimensions:
W130mm x
D 125mm x
H 195mm

Max. dimensions:
W304mm~372mm x
D125.3mm x H195mm

Position controller /
Program controller
common use
Max. dimensions:
W190mm x D25mm x
H155mm

Position controller /
Program controller
common use
Max. dimensions:
W200mm x D34mm x
H155mm

Teaching pendant
with dedicated for EC
power supply unit
Max size: W250mm x
D57.4mm x H164.4mm



SSEL



MSEL



XSEL



TB-02



TB-03



TB-03E/TB-02E

IAI Industrieroboter GmbH

Ober der Röth 4
65824 Schwalbach am Taunus, Germany

www.iai-automation.com
info@iai-automation.com

IAI America, Inc.

0690 W. 237th Street, Torrance, CA 90505 (310) 891-6015

IAI (Shanghai) Co., Ltd.

Shanghai Jiahua Business Center A8-303, 808,
Hongqiao Rd., Shanghai 200030, China

IAI Robot (Thailand) Co., Ltd.

825 Phairojkiija Tower 7th Floor, Debaratana Rd.,
Bangna Nuea, Bangna, Bangkok 10260, Thailand