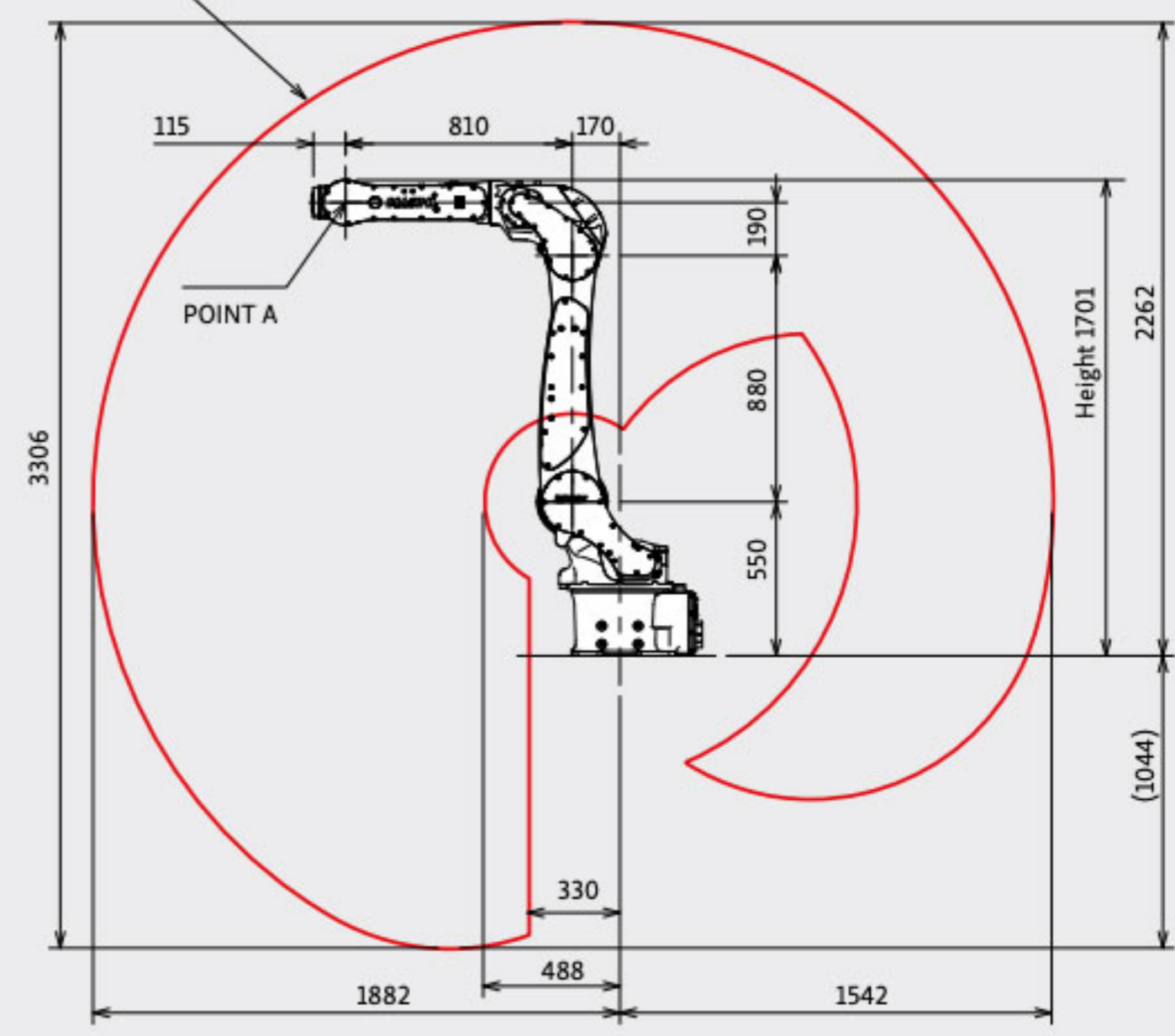
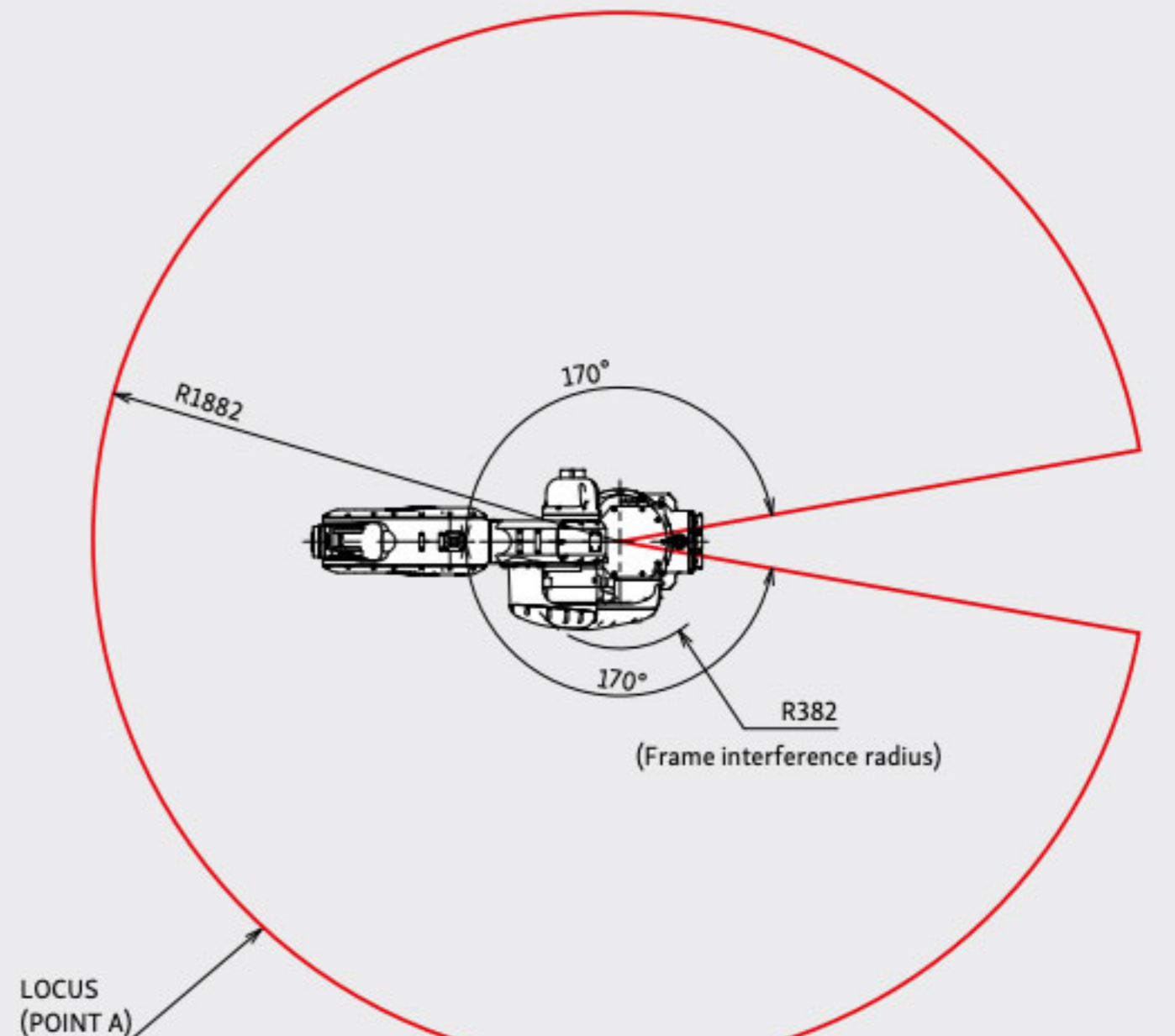


**BASIC SPECIFICATION OF ROBOT**

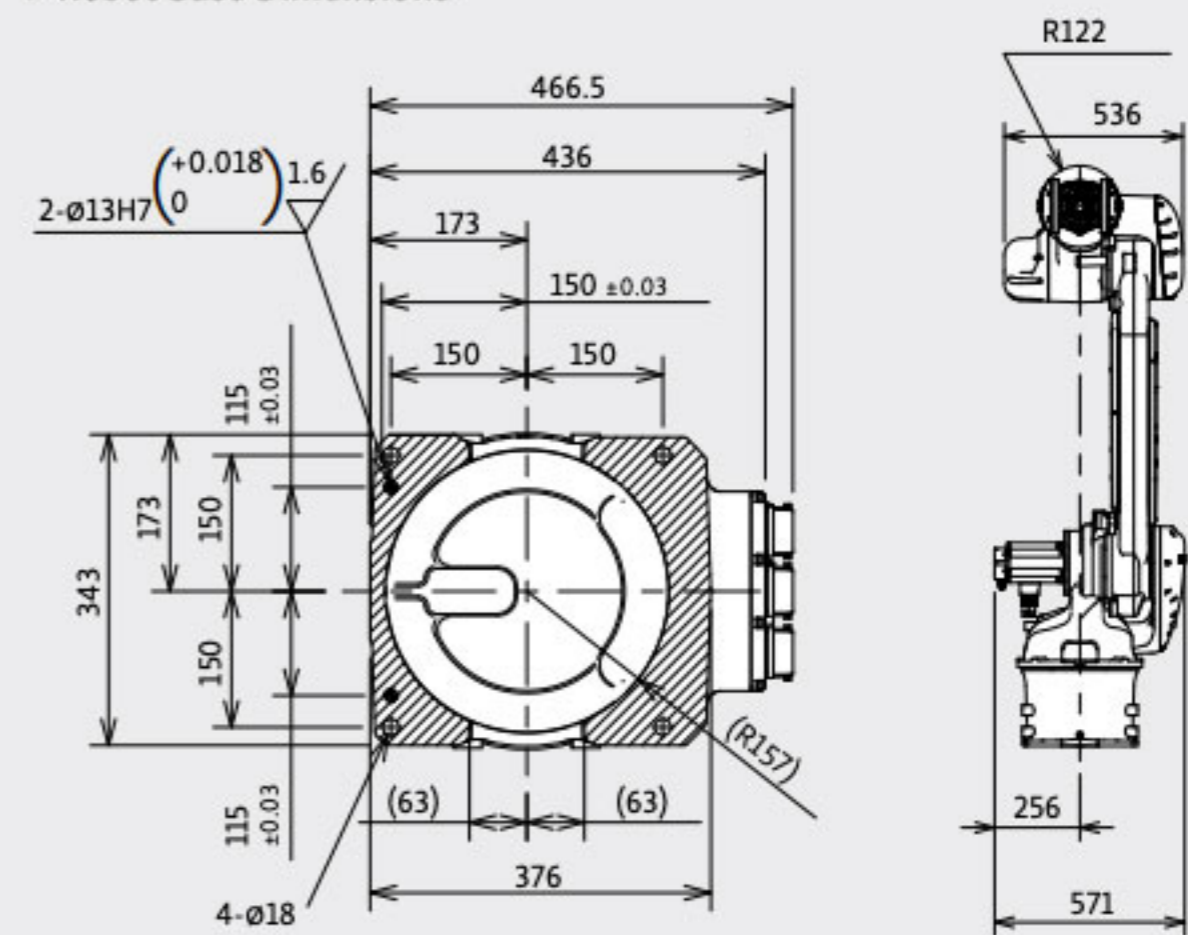
Items		Specification	
Robot type		MZ25-01	
Structure		Articulated robot	
Degree of Freedom		6	
Maximum motion range	Arm	J1 Swivel	$\pm 2.97 \text{ rad } (\pm 170^\circ)$
		J2 Forward/Backward	$+1.83 \sim -2.62 \text{ rad } (+105 \sim -150^\circ)$
		J3 Upward/Downward	$+5.04 \sim -2.81 \text{ rad } (+289 \sim -161^\circ)$
	Wrist	J4 Rotation2	$\pm 3.32 \text{ rad } (\pm 190^\circ)$
		J5 Bend	$\pm 2.53 \text{ rad } (\pm 145^\circ)$
		J6 Rotation1	$\pm 6.28 \text{ rad } (\pm 360^\circ)$
Maximum Velocity*1	Arm	J1 Swivel	3.67rad/s (210°/s)
		J2 Forward/Backward	3.23rad/s (185°/s)
		J3 Upward/Downward	4.71rad/s (270°/s)
	Wrist	J4 Rotation2	7.33rad/s (420°/s)
		J5 Bend	7.33rad/s (420°/s)
		J6 Rotation1	11.73rad/s (672°/s)
Maximum Payload	Wrist	25kg	
Maximum static load torque	J4 Rotation2	52N·m	
	J5 Bend	52N·m	
	J6 Rotation1	32N·m	
Maximum moment of inertia*2	J4 Rotation2	2.4kg·m <sup>2</sup>	
	J5 Bend	2.4kg·m <sup>2</sup>	
	J6 Rotation1	1.3kg·m <sup>2</sup>	
Maximum Reach		1882mm	
Position repeatability*3		$\pm 0.05 \text{ mm}$	
Air tubes		$\varnothing 6 \times 1, \varnothing 10 \times 1$	
Application cables		24 wires (Including wires for optional valves)	
Mounting Condition		Floor / Inverted / Angle	
Ambient Temperature		0~45°C*4	
Ambient Humidity		20~85%RH (No dew or frost allowed)	
Protection class		IP 67 equivalent (dust-proof, moisture-resistant)	
Robot weight		250kg	

\*1: The maximum velocity in the chart is the maximum value. It will change depending on the operation program and the wrist load condition.  
 \*2: Depends on wrist load condition.  
 \*3: JIS B 8432 conformance.  
 \*4: Using at 1000m or lower sea level. Ambient temperature has limitations when allowable altitude is exceeded.

1[rad] = 180/π[°], 1[N·m] = 1/9.8[kgf·m]



● Robot Base Dimensions



● Wrist Dimensions

